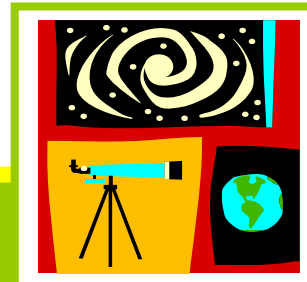


Annapolis

Café Scientifique



**Special
Event:
Tuesday
Oct, 23
7:00 pm**

at b.b. bistro

112A Annapolis Street
Annapolis, Maryland
410-990-4646



The Clergy Letter Project: Scientists and Clergy Working Together To Improve Science Literacy

Dr. Michael Zimmerman

Dean of College of Liberal Arts and Sciences
and Professor of Biology, Butler University,
Indianapolis, Indiana

Founder of The Clergy Letter Project

(www.evolutionsunday.org)

Co-sponsored with Alliance for Science: www.allianceforscience.org

We suggest calling the b.b. bistro ahead of time for dinner reservations.

WHAT IS CAFÉ SCIENTIFIQUE? The concept of Café Scientifique is not new. The first cafés were held in the UK in Leeds in 1998. From there, cafés sprang up in Newcastle, Nottingham and Oxford and then gradually spread throughout the UK. Currently, over 30 cafés meet regularly to hear scientists or writers on science talk about their work and discuss it with diverse audiences. There are about 46 cafés in the United States with the next closest location sponsored by the National Science Foundation in Arlington, Virginia. Cafe Scientifique is a place where, for the price of a cup of coffee or a glass of wine, anyone can come to explore the latest ideas in science and technology. All are welcome.